

## Hydraulic Vise Action Grips

G135 Series hydraulic vise action grips are designed for tensile testing of materials that require relatively high test forces. The grips are suitable for testing metals and high strength non metallic samples. They are ideal for testing flat, hexagonal, and round test forms.

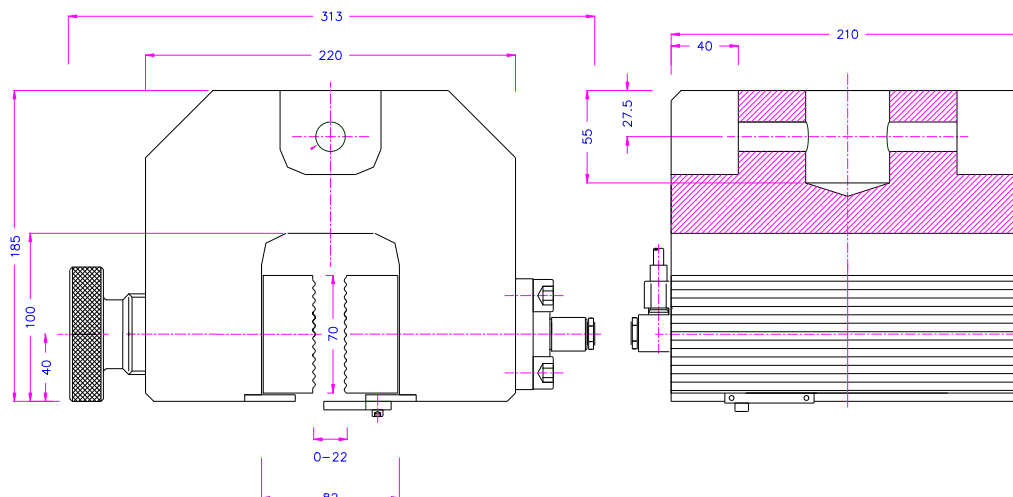
Quick clamping and release of the samples is possible. The grips are available in both single cylinder and dual cylinder models. In the case of the single cylinder model a manually adjustable knob sets the position of one side of the jaws. Dual cylinders ensure the grips close symmetrically around the test sample axis.

Hydraulic operation enables reliable, consistent and adjustable clamp loading which is important in the case of relatively fragile samples. The grips feature a side opening design for simple and quick specimen insertion. A variety of wedge jaw faces are available for different specimens.

To operate the grips a power pack with high pressure hydraulic output is needed for opening, closing, and setting the clamp forces.

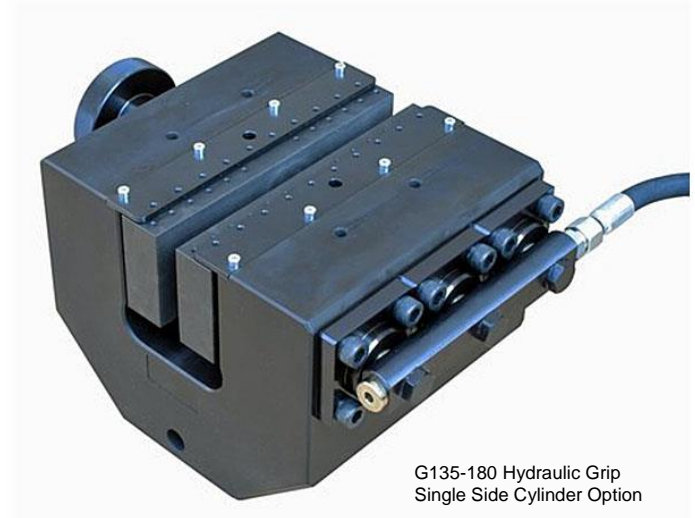
	<b>G135-60</b>	<b>G135-180</b>
Maximum Clamp Load (315 Bar)	60 kN (13300 lb)	180 kN (40000 lb)
Maximum Tensile Load	30 kN (6800 lb)	90 kN (20000 lb)
Max Sample Thickness	15 mm (0.6 in)	15 mm (0.6 in)
Clamp Mode	Single or Dual Side Options	

	<b>J135-60</b>	<b>J135-180</b>
Dimension	60 mm x 66 mm wide	70 mm x 210 mm
Smooth surface	-B	-B
Pyramid serrated (1.2 mm)	-BP	-BP
V serrated Jaws	-BV 8-30 mm diameter	-BV 8-30 mm diameter
Wave	-BW	-BW
Diamond coated	-BD	-BD



G135 Hydraulic Grip for wide width textiles  
Single Side Cylinder Option shown  
Shown with Wave jaws.

Configurations available per ASTM D4595  
and ISO 10319



G135-180 Hydraulic Grip  
Single Side Cylinder Option



G135-60 Hydraulic Grip  
Single Side Cylinder Option