

## Pneumatic Cord, Yarn, and Fine Wire Grips

Cord, fiber, yarn, monofilament and fine wire testing requires special grips to reduce breakage in the grip area. These air driven grips distribute the contact stress and cushion the gripping process without pinching samples. You may adjust the air pressure to match specific test needs.

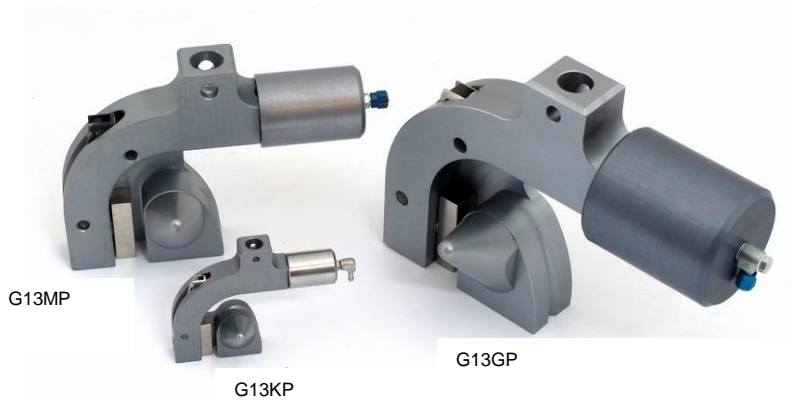
- The breakage of the specimen in the clamping area is prevented by generating a slow notch free stress relief
- Guide horn with centering groove quickens sample loading
- Adjustable grip force reduces breakage at the grip section.
- Force ratings  
200 N (45 lb),  
2000 N (450 lb),  
5000 N (1125 lb)

### Adapters

The grip is attached to a universal test system using standard quick attach adapters with dowel pins.

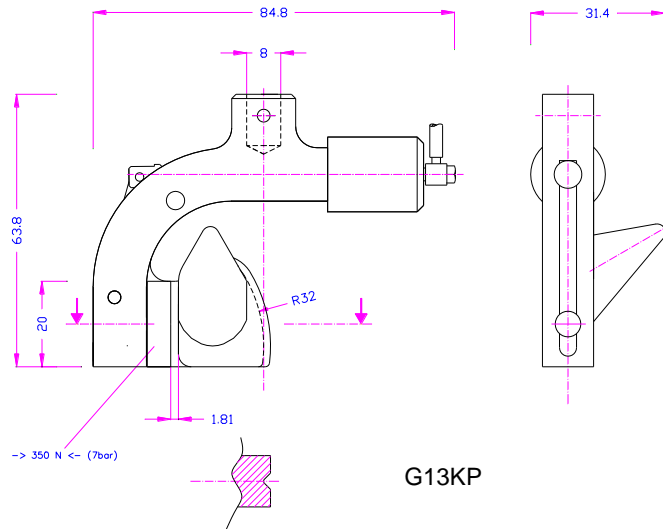
### Air Kit

You may choose from a hand or foot operated air supply. See G205 Air Kits.



Model number	G13KP	G13MP	G13GP
Applicable for	Fibers, filaments etc up to 200N (45 lb)	Yarns, cords, strands up to 2000 N (450 lb)	Wires, strands, cords up to 5 kN (1125 lb)
Tensile force	200 N or 45 lb (100 psi)	2000 N or 450 lb (100 psi)	5000 N or 1125 lb (100 psi)
Recommended specimen diameter	1 mm Ø or 0.04 inch	2 mm Ø or 0.08 inch	3 mm Ø or 0.125 inch
Minimal specimen length	15 cm	25 cm	30 cm
Jaws surfaces	Smooth jaws or Diamond jaws - other surfaces on request	Smooth jaws or Diamond jaws - other surfaces on request	Smooth jaws or Diamond jaws - other surfaces on request
Clamping surface of jaws HxW	6 x 20mm	12 x 36mm	15 x 44mm
Temperature range*	-10 to 80°C	-10 to 80°C	-10 to 80°C
Pneumatic connection	M3 for micro fittings or with additional adapter (G205-PK23) for 1/8" normal pneumatics	Internal thread M5	Internal thread M5
Weight including jaws	102 gram per grip	590 gram per grip	1.25 kg per grip

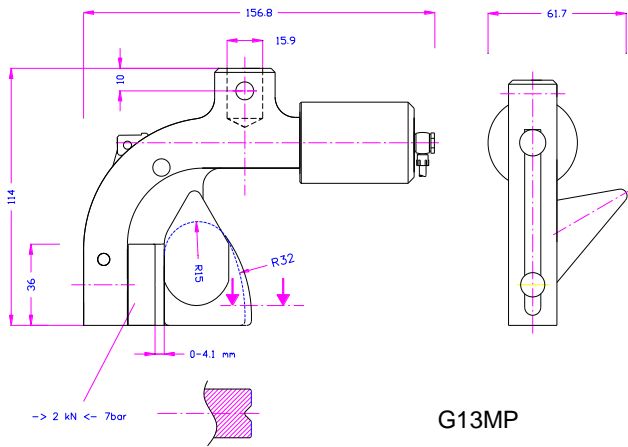
\* Other temperature ranges on request



G13KP



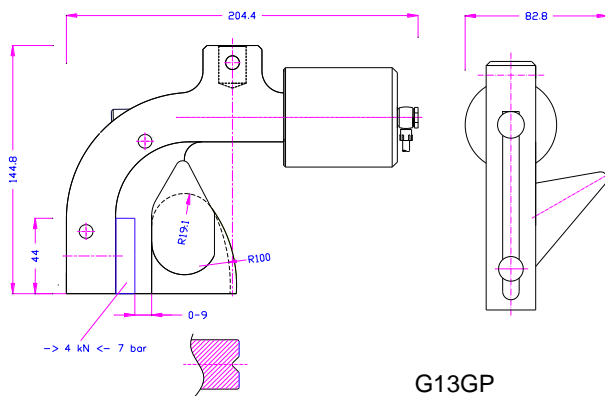
G13KP with G205-PK23 adapter



G13MP

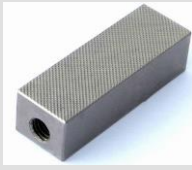


G13MP

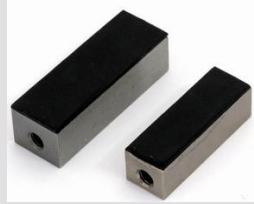


G13GP





BP 0.5 Jaw  
Diamond (serrated, cross cut) 0.5x45°



BG  
Rubber jaws



SS option  
Stainless steel guide horn

## Accessories for the pneumatic versions of G13:



### G205-1 Foot Switch Kit

2 pneumatic foot switches, tubes and fittings

Note – does not lock open: The jaws of the grip open by pressing the foot pedal and close after removing the foot from the pedal.



### G205-2 Foot Switch Kit

2 pneumatic foot switches, tubes and fittings, Includes locking Feature: The jaws of the grip open by pressing the foot pedal and remain opened after removing the foot from the pedal. The jaws close by pressing the pedal one more time.



### G205-PR Pressure Regulator

Optional for G205-1 or G205-2 - Pressure regulator - To adjust air pressure between 1-10 bar (14-140 psi)



### G205-3 Hand Switch Kit

1 set of pneumatic hand switches, tubes and fittings

Includes locking function: Handle with 2 positions. The jaws of the grip close by pulling the handle and remain closed. The jaws open by pushing the handle back.



### G205-25 Silent Compressor for laboratories

Max pressure: 16 bar; noise level: 45dB(A); Motor 400 watt; displacement 25 l/min; With pressure reducer / water trap; Dimensions: 382x300x334 mm (L x W x H), tank size 4 litres, Weight ~ 23 kg