

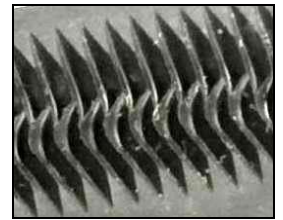
**G622 Mechanical Wedge Grip**  
 Rated to 10 kN (2250 lbs)

|                   |  |
|-------------------|--|
| <b>Model</b>      | <b>G622-10-11</b>  |
| Tensile force     | 10 kN (2250 lbs)   |
| Max. opening      | 11 mm (0.43")  |
| Temperature range | 0° to +130°C (32° to 266°F)<br>-70° to +280°C (-94° to +536°F) (GS\622-Ni) |
| Body              | Steel, phosphated  |
| Weight            | 1.83 kg (4 lbs) each without jaws  |



**Interchangeable Jaws or Faces**

| Jaw      | Description  |
|----------|--|
| JS622-BP | Pyramid jaws 34x40 mm with 0-9 mm opening          |
| JS622-BV | V-jaws 40 mm clamping height with Ø 3-9 mm opening |



**Engineered Solutions**

