

G256 Mechanical Wedge Grip Rated 5 kN (1125 lb)

Model	G256-5-10
Tensile force	5 kN (1125 lb)
Body	Steel - manganese phosphate coating
Temperature range	0°C up to +130°C (G256-5-10) -70°C up to +280°C (G256-5-10-HT)



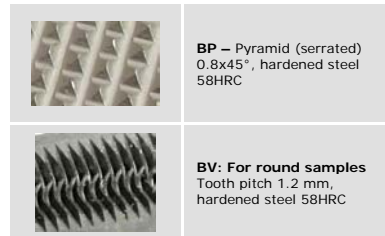
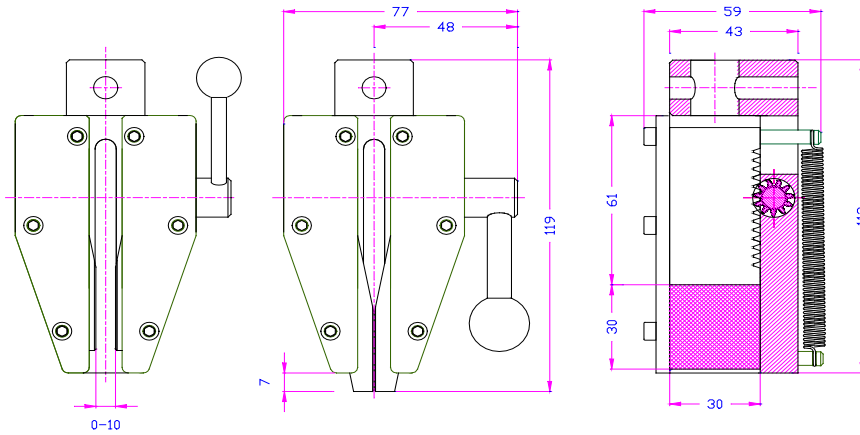
G256-5-10

J256 Jaws

Model	Surface	Clamping surface H x B	Opening
J256BP	Pyramid (serrated) jaws	30 x 30 mm	0 – 10 mm
J256BV	V-jaws	Clamping height 30mm	2 – 10 mm Ø



G256-5-10-HT nickel plated



G256 wedge action grips feature easy specimen loading, self alignment and centerline sample positioning. Wedge gripping forces increase as pull load increases, so these grips are ideal when high clamp load is needed – such as gripping difficult to hold materials, or elastic materials that contract as they are pulled. Wedge jaws offer a high mechanical advantage by the way they tighten. As the grip body is drawn up, the inclined sides push against the matching side of the faces which move laterally against the specimen. The grip faces are spring loaded on the top, against the body. The open front allows faces to be interchanged as well as easy specimen loading.